

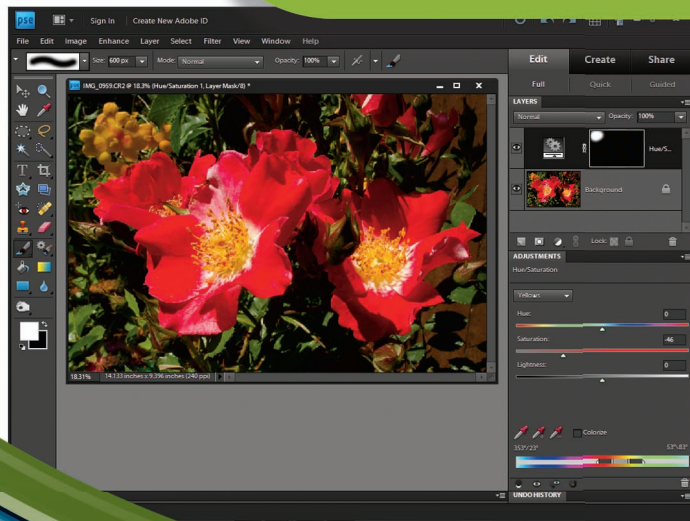
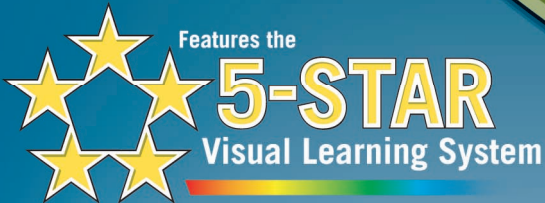
Read Less-Learn More®



TOP
100

Simplified®

TIPS & TRICKS



Adobe®

Photoshop® Elements 9

Photoshop® Elements 9

Top 100

Simplified®

TIPS & TRICKS

by Rob Sheppard



Photoshop® Elements 9: Top 100 Simplified® Tips & Tricks

Published by
Wiley Publishing, Inc.
10475 Crosspoint Boulevard
Indianapolis, IN 46256
www.wiley.com

Published simultaneously in Canada

Copyright © 2011 by Wiley Publishing, Inc., Indianapolis, Indiana

Library of Congress Control Number: 2010938834

ISBN: 978-0-470-91960-6

Manufactured in the United States of America

10 9 8 7 6 5 4 3 2 1

No part of this publication may be reproduced, stored in a retrieval system or transmitted in any form or by any means, electronic, mechanical, photocopying, recording, scanning or otherwise, except as permitted under Sections 107 or 108 of the 1976 United States Copyright Act, without either the prior written permission of the Publisher, or authorization through payment of the appropriate per-copy fee to the Copyright Clearance Center, 222 Rosewood Drive, Danvers, MA 01923, 978-750-8400, fax 978-646-8600. Requests to the Publisher for permission should be addressed to the Permissions Department, John Wiley & Sons, Inc., 111 River Street, Hoboken, NJ 07030, 201-748-6011, fax 201-748-6008, or online at www.wiley.com/go/permissions.

Trademark Acknowledgments

Wiley, the Wiley Publishing logo, Visual, the Visual logo, Simplified, Read Less - Learn More and related trade dress are trademarks or registered trademarks of John Wiley & Sons, Inc. and/or its affiliates. Adobe and Photoshop are registered trademarks of Adobe Systems, Inc. All other trademarks are the property of their respective owners. Wiley Publishing, Inc. is not associated with any product or vendor mentioned in this book.

Contact Us

For general information on our other products and services contact our Customer Care Department within the U.S. at 877-762-2974, outside the U.S. at 317-572-3993, or fax 317-572-4002.

For technical support please visit www.wiley.com/techsupport.

LIMIT OF LIABILITY/DISCLAIMER OF WARRANTY: THE PUBLISHER AND THE AUTHOR MAKE NO REPRESENTATIONS OR WARRANTIES WITH RESPECT TO THE ACCURACY OR COMPLETENESS OF THE CONTENTS OF THIS WORK AND SPECIFICALLY DISCLAIM ALL WARRANTIES, INCLUDING WITHOUT LIMITATION WARRANTIES OF FITNESS FOR A PARTICULAR PURPOSE. NO WARRANTY MAY BE CREATED OR EXTENDED BY SALES OR PROMOTIONAL MATERIALS. THE ADVICE AND STRATEGIES CONTAINED HEREIN MAY NOT BE SUITABLE FOR EVERY SITUATION. THIS WORK IS SOLD WITH THE UNDERSTANDING THAT THE PUBLISHER IS NOT ENGAGED IN RENDERING LEGAL, ACCOUNTING, OR OTHER PROFESSIONAL SERVICES. IF PROFESSIONAL ASSISTANCE IS REQUIRED, THE SERVICES OF A COMPETENT PROFESSIONAL PERSON SHOULD BE SOUGHT. NEITHER THE PUBLISHER NOR THE AUTHOR SHALL BE LIABLE FOR DAMAGES ARISING HEREFROM. THE FACT THAT AN ORGANIZATION OR WEBSITE IS REFERRED TO IN THIS WORK AS A CITATION AND/OR A POTENTIAL SOURCE OF FURTHER INFORMATION DOES NOT MEAN THAT THE AUTHOR OR THE PUBLISHER ENDORSES THE INFORMATION THE ORGANIZATION OR WEBSITE MAY PROVIDE OR RECOMMENDATIONS IT MAY MAKE. FURTHER, READERS SHOULD BE AWARE THAT INTERNET WEBSITES LISTED IN THIS WORK MAY HAVE CHANGED OR DISAPPEARED BETWEEN WHEN THIS WORK WAS WRITTEN AND WHEN IT IS READ.

FOR PURPOSES OF ILLUSTRATING THE CONCEPTS AND TECHNIQUES DESCRIBED IN THIS BOOK, THE AUTHOR HAS CREATED VARIOUS NAMES, COMPANY NAMES, MAILING, E-MAIL AND INTERNET ADDRESSES, PHONE AND FAX NUMBERS AND SIMILAR INFORMATION, ALL OF WHICH ARE FICTITIOUS. ANY RESEMBLANCE OF THESE FICTITIOUS NAMES, ADDRESSES, PHONE AND FAX NUMBERS AND SIMILAR INFORMATION TO ANY ACTUAL PERSON, COMPANY AND/OR ORGANIZATION IS UNINTENTIONAL AND PURELY COINCIDENTAL.



Wiley Publishing, Inc.

U.S. Sales

Contact Wiley at
(800) 762-2974 or
fax (317) 572-4002.

CREDITS

Executive Editor

Jody Lefever

Sr. Project Editor

Sarah Hellert

Technical Editor

Dennis R. Cohen

Copy Editor

Scott Tullis

Editorial Director

Robyn Siesky

Editorial Manager

Rosemarie Graham

Business Manager

Amy Knies

Sr. Marketing Manager

Sandy Smith

**Vice President and
Executive Group Publisher**

Richard Swadley

**Vice President and
Executive Publisher**

Barry Pruett

Project Coordinator

Patrick Redmond

**Graphics and Production
Specialists**

Andrea Hornberger

Jennifer Mayberry

Quality Control Technician

Dwight Ramsey

Proofreader

Cynthia Fields

Indexer

BIM Indexing & Proofreading Services

Artists

Ana Carrillo

Ronda David-Burroughs

Jill A. Proll

ABOUT THE AUTHOR

Rob Sheppard is the author/photographer of over 30 photography books, a well-known speaker and workshop leader, and is editor-at-large for the prestigious *Outdoor Photographer* magazine. As author/photographer, Sheppard has written hundreds of articles about digital photography, plus books ranging from guides to photography such as *Digital Photography: Top 100 Simplified Tips & Tricks* and *Digital Photography Simplified* to books about Photoshop Elements and Lightroom including *Adobe Photoshop Lightroom 2 for Digital Photographers Only* and *Photoshop Elements 8: Top 100 Simplified Tips & Tricks*. His Web site is at www.robsheppardphoto.com and his blog is at www.photodigitary.com.

ACKNOWLEDGMENTS

I have enjoyed doing the Photoshop Elements *Top 100 Simplified Tips & Tricks* books. Photographers are shortchanged when they are simply pushed into Photoshop when what would really work best for them is Photoshop Elements. So first, I have to thank all of the photographers who have been in my workshops and classes because it is their questions and their responses to classwork that helps me better understand what photographers really need to know about digital photography. To do this book right for photographers requires a lot of folks doing work along the way. The folks at Wiley are great both for their work in creating books like this and their work in helping make the book the best it can be. I really appreciate all the work that editor Sarah Hellert did along with her associates in helping keep this book clear and understandable for the reader. I also thank my terrific wife of 30 years who keeps me grounded and focused while I work on my books. I thank the people at Werner Publications, my old home, where I was editor of *Outdoor Photographer* for 12 years and helped start *PCPhoto* magazine — I thank them for their continued support so I can stay on top of changes in the industry. And I thank Rick Sammon for his support and inspiration in doing photography books.

How To Use This Book

Who This Book Is For

This book is for readers who know the basics and want to expand their knowledge of this particular technology or software application.

The Conventions in This Book

1 Steps

This book uses a step-by-step format to guide you easily through each task. Numbered steps are actions you must do; bulleted steps clarify a point, step, or optional feature; and indented steps give you the result.

2 Notes

Notes give additional information — special conditions that may occur during an operation, a situation that you want to avoid, or a cross reference to a related area of the book.

3 Icons and Buttons

Icons and buttons show you exactly what you need to click to perform a step.

4 Tips

Tips offer additional information, including warnings and shortcuts.

5 Bold

Bold type shows text or numbers you must type.

6 Italics

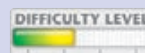
Italic type introduces and defines a new term.

7 Difficulty Levels

For quick reference, these symbols mark the difficulty level of each task.



Demonstrates a new spin on a common task



Introduces a new skill or a new task



Combines multiple skills requiring in-depth knowledge



Requires extensive skill and may involve other technologies

FIX PROBLEM EXPOSURES with layer blending modes

At times your picture may be simply too dark or too light. The camera makes a mistake in exposure, or the photographer sets the camera wrong. You end up with a picture that needs immediate correction, either to make it brighter or make it darker.

Photoshop Elements gives you a way to do this in its layer blending modes. You need to add an adjustment layer to your photograph. It really does not matter which adjustment you choose because you will not be using the adjustment layer for its original adjustment purpose. You are simply using this layer so that Photoshop Elements has something to work with

when communicating between layers, which is what layer blending modes do. When you first open the blending modes, you see a long list of choices — ignore them and concentrate on two key modes for photographers: Multiply and Screen.

These photos were shot in the chaparral of the Santa Monica Mountains Recreation Area. These mountains are near Los Angeles, yet most Los Angeles photographers overlook this area and miss great shots. Often photographers overlook nearby places, but with an attitude of discovery you can find amazing areas for photography anywhere.

1

Fix a Too-Bright Photograph

- 1 Click the Adjustment Layer icon and select Levels.
- 2 The Levels adjustment panel appears along with a new adjustment layer in the Layers panel.

3

- 3 Click the blending modes drop-down menu, which says Normal by default.
- 4 Click Multiply.
- 5 The whole photo darkens by about one f-stop.

Fix a Too-Dark Photograph

- 1 Click the Adjustment Layer icon and select Levels.
- 2 The Levels adjustment panel appears along with a new adjustment layer in the Layers panel.

3

- 3 Click the blending modes drop-down menu, which says Normal by default.
- 4 Click Screen.
- 5 The whole photo lightens by about one f-stop.

TIPS

Caution!

These blending modes are no substitute for good exposure. They really can help when you run into problems and challenges with specific images, but you should not use them as a habit because they can only fix limitations in the picture and not capture what was originally in the scene.

More Options!

Noise can be a problem when you use Screen as a blending mode. Noise is always in a picture but is usually well hidden in the darkest parts of the image. Because Screen brightens those dark areas, it also often reveals noise. That is not a problem of Screen, but a fact of life for digital photography.

Did You Know?

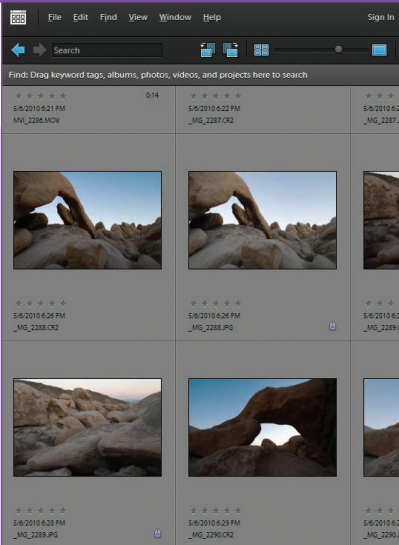
Neither Screen nor Multiply have controls other than on or off. You either use them or you do not. However, the layers that they affect do have an important control that you can use, Opacity. With Opacity, you can reduce the effect of Screen or Multiply as you reduce the opacity.

Table of Contents

1

Organize and Prepare Photos for Processing

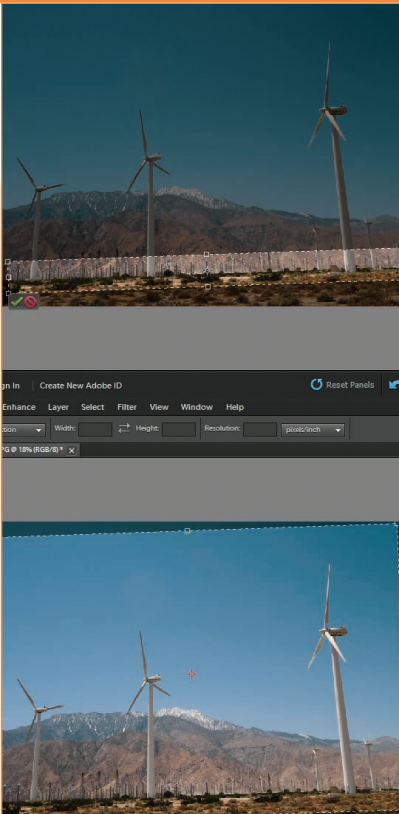
#1	Set Up a Workflow	4
#2	Import Your Images	6
#3	View Photos with Full-Screen Mode	10
#4	Sort the Good Pictures from the Bad	12
#5	Stack Your Images	14
#6	Create Albums to Group Your Pictures	16
#7	Use Keywords to Tag Your Images	18
#8	Tag Photos with Face Recognition	22
#9	Change the Organizer Interface As Needed	24
#10	Back Up Your Pictures to Protect Them	26



2

Start Adjusting Your Images in Photoshop Elements

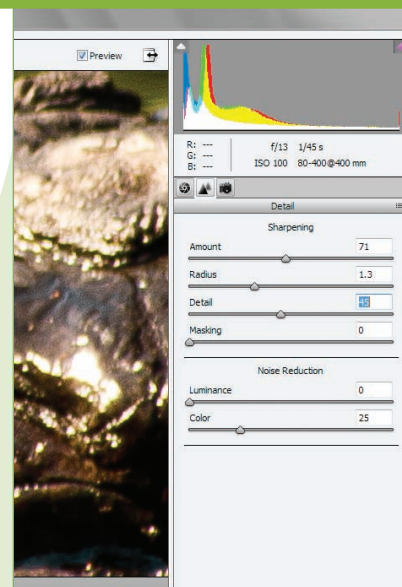
#11	Open Pictures and Use Save As	30
#12	Make the Editor Interface Your Own	32
#13	Set Preferences to Make Editor Work for You	34
#14	You Cannot Hurt Your Pictures.	36
#15	Crop Your Photos for Tighter Shots	38
#16	Fix and Rotate Crooked Pictures.	40
#17	Use Guided Edit to Help You Learn the Program	42
#18	Use Guided Edit for Special Effects.	44
#19	Set Blacks and Whites with Levels	46
#20	Adjust Your Midtones with Levels.	48
#21	Adjust Your Midtones with Color Curves	50
#22	Quickly Adjust Dark Shadows and Bright Highlights.	52
#23	Correct Color to Remove Color Casts	54
#24	Enhance Color with Hue/Saturation	56
#25	Use Quick Edit to Work Fast	58



3

Work with RAW Photos in Photoshop Elements

- #26 Change Images Nondestructively 62
- #27 Crop Your Photos to Start Your Processing 64
- #28 Adjust Blacks and Whites to Give a Photo Strength 66
- #29 Adjust Midtones to Make Tonalities Light or Dark 68
- #30 Correct Color to Clean Up Color Casts 70
- #31 Use Vibrance and Clarity to Intensify Images 72
- #32 Sharpen Photos with Precision 74
- #33 Control Noise in Your Photo 76
- #34 Apply Adjustments to Multiple Photos 78
- #35 Move Your Picture to Photoshop Elements 80



4

Choose Local Control Features

- #36 Create and Use a Selection 84
- #37 Use Marquee Tools for Specific Shapes 86
- #38 Use Lasso Tools to Follow Picture Elements 88
- #39 Use Automated Tools for Easy Selections 90
- #40 Expand or Contract Your Selection 92
- #41 Select What Is Easy and Invert 94
- #42 Blend Edges by Feathering 96
- #43 Use Selections for Traditional Edge Darkening 98
- #44 Use the Smart Brush for Specific Area Fixes 100

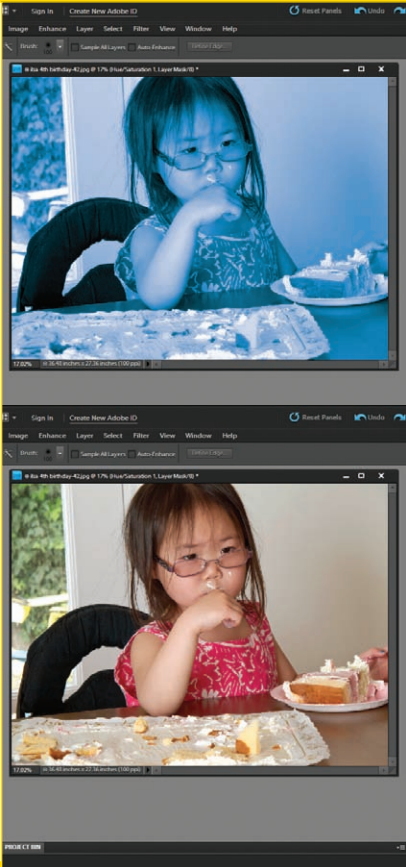


Table of Contents

5

Create Adjustment Layers for Nondestructive Changes

#45	Understand How Layers Work	104
#46	Understand How Adjustment Layers Work	106
#47	Work Blacks and Whites with a Levels Adjustment Layer	110
#48	Work Midtones with a Levels Adjustment Layer	112
#49	Correct Color with an Adjustment Layer	114
#50	Enhance Color with an Adjustment Layer	116
#51	Fix Problem Exposures with Layer Blending Modes	118
#52	Understand How Layer Masks Work	120
#53	Combine Two Photos with Layer Masks	122
#54	Remove Adjustments with Black	126
#55	Add Adjustments Using Black and then White	128
#56	Combine Layer Masks with Selections	132
#57	Balance Colors and Tones in a Picture	134
#58	Bring Out Shadow Detail in Specific Areas	136
#59	Darken Highlight Detail in Specific Areas	138
#60	Flatten Layers When Done	140



6

Solve Photo Problems

- #61 Clone Out Problems 144
- #62 Remove People from a Scene with Photomerge
Scene Cleaner 148
- #63 Remove Unwanted Objects with Content-Aware
Spot Healing 150
- #64 Fix Problems due to Lens Distortion 152
- #65 Fix Perspective Problems with Building Photographs 154
- #66 Remove Dead Space with Recompose 156
- #67 Make an Out-of-Focus Background 158
- #68 Remove Distracting Colors 160
- #69 Improve Blank Skies 162
- #70 Create the Focus with Gaussian Blur 166
- #71 Add a New Background for Your Subject 168



7

Size and Sharpen Photos

- #72 Basic Workflow for Image Sizing 174
- #73 Size Photos for Printing 176
- #74 Size Photos for E-mail 178
- #75 Sharpen Photos with Unsharp Mask 180
- #76 Sharpen Photos with Adjust Sharpness 182
- #77 Sharpen Photos When You Have Layers 184
- #78 Selectively Sharpen Parts of Your Photo 186

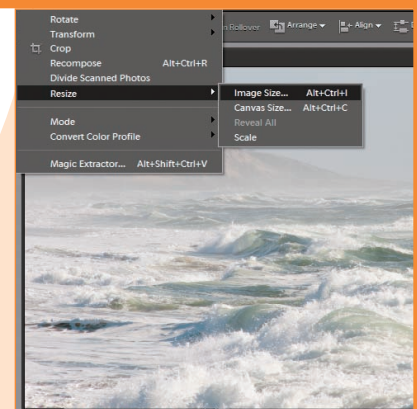


Table of Contents

8

Go Beyond the Basics

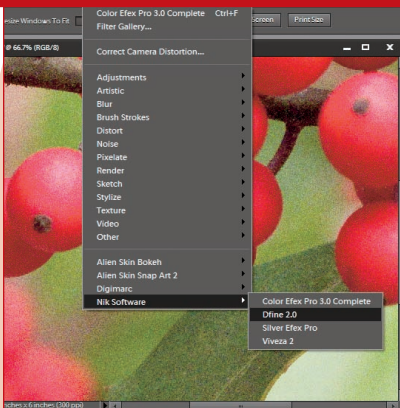
#79	Convert Color Photos to Black-and-White	190
#80	Adjust Your Photos in Black-and-White	192
#81	Create Toned Images	194
#82	Use the Smart Brush for Creative Effects	196
#83	Create a Hand-Colored Look	198
#84	Photograph a Scene to Get More Exposure Detail	202
#85	Merge Photos for More Photo Detail	204
#86	Photograph a Scene for a Panoramic Image	206
#87	Merge Photos for a Panoramic Image	208
#88	Group Images on a Page	212
#89	Transfer Styles between Photos	216



9

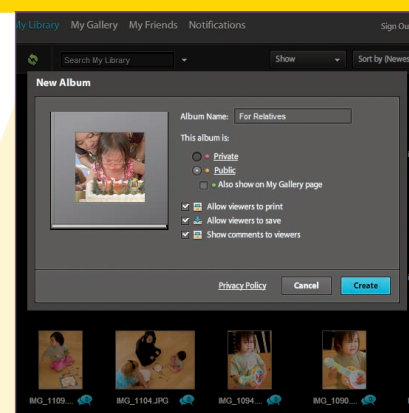
Software Plug-ins Make Work Easier

#90	Use Viveza for Quick Creative Adjustments	220
#91	Use Color Efex for Efficient Photo Work	222
#92	Remove Noise with Dfine	224
#93	Get Dramatic Black-and-White with Silver Efex Pro	226
#94	Use Bokeh for Easy Depth-of-Field Effects	228
#95	Try PhotoTune for Fast Color and Tonal Adjustments	230
#96	Use Snap Art for Creative Effects	232



Get Photos out of Photoshop Elements

- #97 Protect Your Photos with Online Backup 236
- #98 Access Your Photos Anywhere Internet Service is Available . . . 238
- #99 Create Online Photo Albums 240
- #100 Share Your Photos Online 242
- #101 Print Your Photos 244
- #102 Print a Group of Photos 248
- #103 Add a Border Effect to Your Pictures. 250



Chapter

1

Organize and Prepare Photos for Processing

Adobe keeps improving Photoshop Elements and now has reached version 9. This new edition offers both new controls and a revision of how the program processes photos for optimum results. Photoshop Elements has become one of the best image-processing programs on the market, and is certainly one of the best values for the money. It may be Photoshop's smaller sibling, but it is no second-rate program. Photoshop Elements uses the exact same processing algorithms that Photoshop has, but it is simpler and directly geared to photographers. In addition, the Windows and Mac versions of Photoshop Elements Editor are essentially the same, and the tips in this book work the same with either platform except for occasional keyboard commands.

Photoshop Elements is a complete program that enables you to import images, organize them, and sort the good from the bad as well as make changes to optimize individual photos. The order of this book follows a workflow that you can use to work efficiently in Photoshop Elements.

In this chapter, you learn what it means to develop a workflow right from the start. You can quickly import, sort, and organize your pictures so that you can find them more easily in the future. You can customize your workspace to fit your needs and interests and help you work more efficiently. One important thing to remember: To get the most from Photoshop Elements, you must use it, practice with it, even make mistakes, so that you really know the program.

Top 100

# 1	Set Up a Workflow	4	
# 2	Import Your Images	6	
# 3	View Photos with Full-Screen Mode	10	
# 4	Sort the Good Pictures from the Bad.	12	
# 5	Stack Your Images	14	
# 6	Create Albums to Group Your Pictures	16	
# 7	Use Keywords to Tag Your Images	18	
# 8	Tag Photos with Face Recognition	22	
# 9	Change the Organizer Interface As Needed	24	
#10	Back Up Your Pictures to Protect Them.	26	