

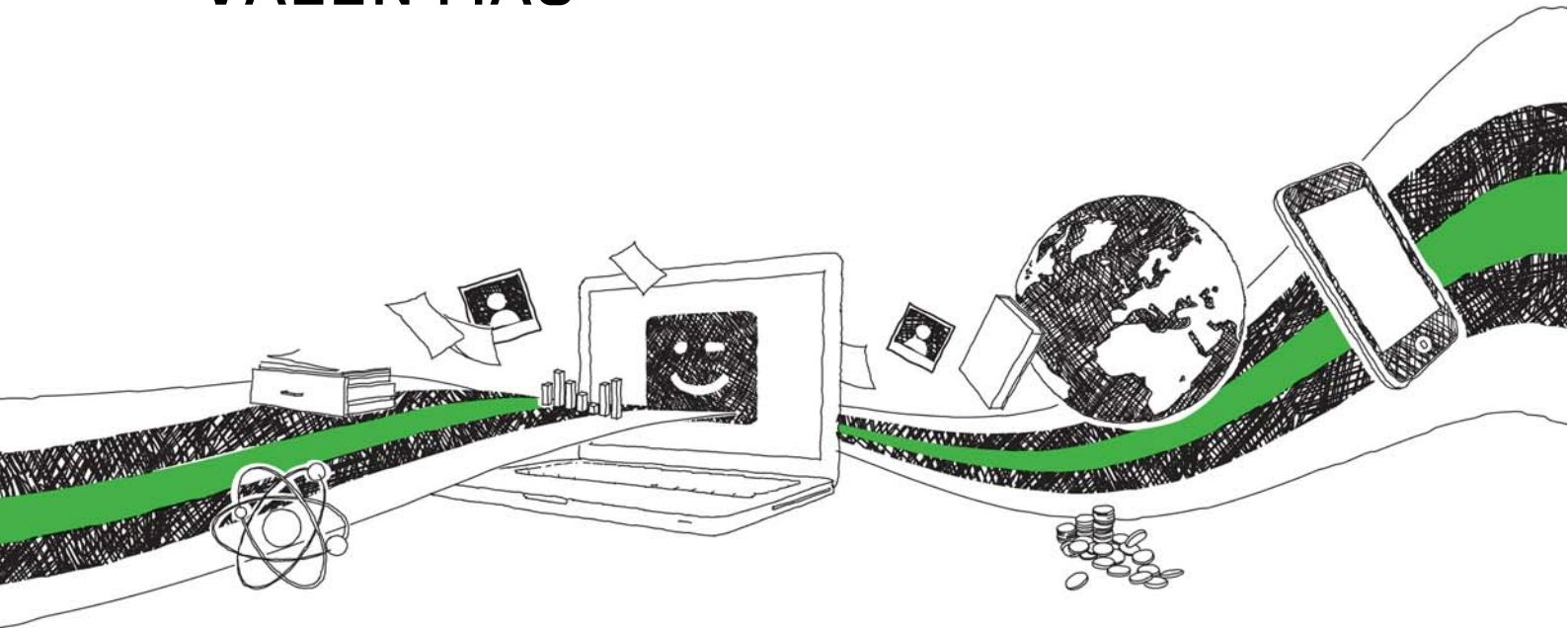
**Boris Vázquez Calvo**

Case study: A Spanish commented translation of Virginia Woolf's "To the lighthouse"

Translation Quality Assessment

**Trabajo de Investigación**

# CON GRIN SUS CONOCIMIENTOS VALEN MAS



- Publicamos su trabajo académico, tesis y tesina
- Su propio eBook y libro - en todos los comercios importantes del mundo
- Cada venta le sale rentable

Ahora suba en [www.GRIN.com](http://www.GRIN.com)  
y publique gratis



**Bibliographic information published by the German National Library:**

The German National Library lists this publication in the National Bibliography; detailed bibliographic data are available on the Internet at <http://dnb.dnb.de> .

This book is copyright material and must not be copied, reproduced, transferred, distributed, leased, licensed or publicly performed or used in any way except as specifically permitted in writing by the publishers, as allowed under the terms and conditions under which it was purchased or as strictly permitted by applicable copyright law. Any unauthorized distribution or use of this text may be a direct infringement of the author s and publisher s rights and those responsible may be liable in law accordingly.

**Imprint:**

Copyright © 2008 GRIN Verlag  
ISBN: 9783640299331

**This book at GRIN:**

<https://www.grin.com/document/124865>

**Boris Vázquez Calvo**

## **Case study: A Spanish commented translation of Virginia Woolf's "To the lighthouse"**

**Translation Quality Assessment**

## **GRIN - Your knowledge has value**

Since its foundation in 1998, GRIN has specialized in publishing academic texts by students, college teachers and other academics as e-book and printed book. The website [www.grin.com](http://www.grin.com) is an ideal platform for presenting term papers, final papers, scientific essays, dissertations and specialist books.

### **Visit us on the internet:**

<http://www.grin.com/>

<http://www.facebook.com/grincom>

[http://www.twitter.com/grin\\_com](http://www.twitter.com/grin_com)