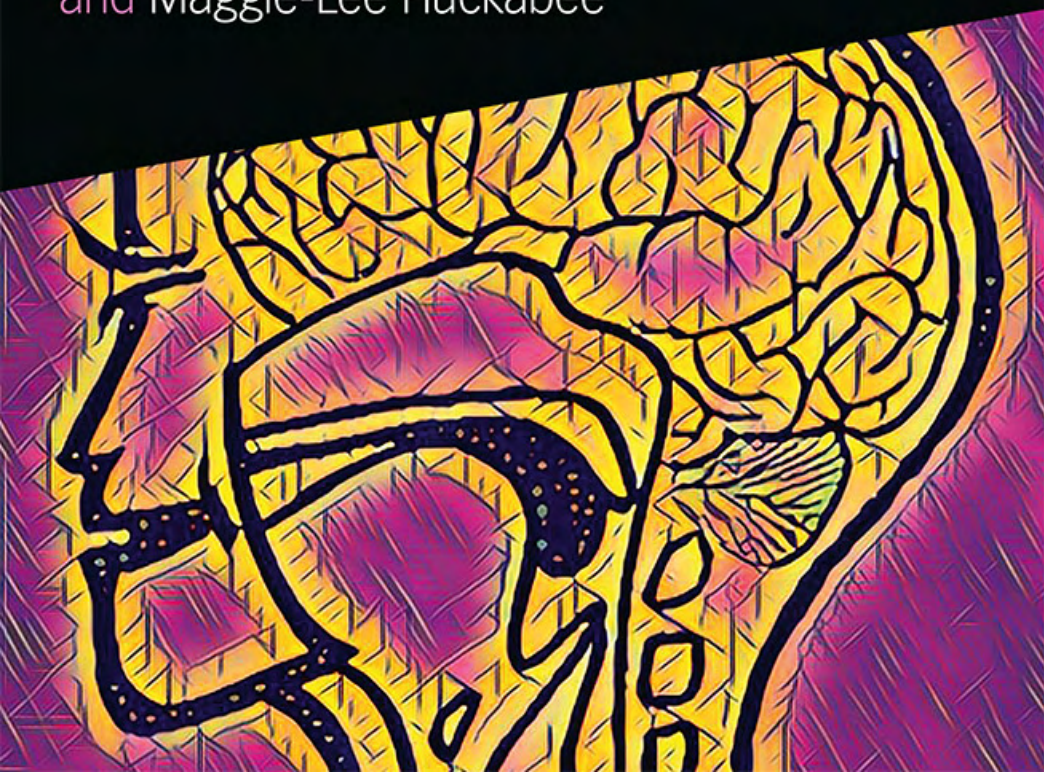


CLINICAL CASES
IN SPEECH AND
LANGUAGE DISORDERS



Clinical Cases in Dysphagia

Edited by Margaret Walshe
and Maggie-Lee Huckabee



Clinical Cases in Dysphagia

Dysphagia is a complex condition that can have significant social, developmental and psychological effects. Alongside the physiology and pathophysiology of the condition, dysphagia can rob patients of the most basic pleasures, such as eating and drinking, causing ongoing difficulties for individuals in social situations throughout the lifespan.

As an acknowledged component of evidence-based practice, the humble case report encourages clinical reflection and may be the spark that generates new thinking and motivation for future research. *Clinical Cases in Dysphagia* provides an opportunity to gain insight into the unique and varied presentation and management of dysphagia across a range of different conditions. With chapters provided by expert clinicians and based on clinical examples ‘from the trenches’, the reader may gain insights into their own practice patterns, refine their clinical problem solving and better value the education that is offered to each of us by our patients.

With additional online resources to support the case-based approach, the book emphasizes the importance of multidisciplinary care and reflects everyday clinical practice, making it a must-read for clinicians and students.

Margaret Walshe, PhD, is an Associate Professor and Head of Department of Clinical Speech and Language Studies at Trinity College Dublin. She has over 30 years’ clinical experience in swallowing disorders and was instrumental in establishing the first postgraduate courses in dysphagia in the Republic of Ireland. She is a Vice-President of the European Society for Swallowing Disorders. Her research interests are acquired neurological dysphagia, implementation science and evidence-based practice.

Maggie-Lee Huckabee, PhD, worked clinically for 15 years before returning to university for a research degree. She is now a Professor in the Department of Communication Disorders, the University of Canterbury and Director of the Rose Centre for Stroke Recovery and Research at St Georges Medical Centre in Christchurch New Zealand. Her research interests focus on the complexities of behaviourally driven neural adaptation and biomechanical change leading to swallowing recovery.

Clinical Cases in Speech and Language Disorders

Clinical Cases in Speech and Language Disorders is a new series of short books that each focus on a specific speech and language disorder, providing an in-depth look at real or imagined scenarios, and discussing relevant assessment and intervention plans using theory, research findings, and clinical reasoning. The overall aim of these books is to provide much-needed resources using real-life clinical cases to help clinicians and students reflect on clinical decision making involving the assessment and management of patients presenting with various speech and language disorders (SLD).

Titles in the series:

Clinical Cases in Dysphagia

Edited by Margaret Walshe and Maggie-Lee Huckabee

For more information about this series, please visit: <https://www.routledge.com/Clinical-Cases-in-Speech-and-Language-Disorders/book-series/CCLSD>

Clinical Cases in Dysphagia

Edited by Margaret Walshe and
Maggie-Lee Huckabee

First published 2019
by Routledge
2 Park Square, Milton Park, Abingdon, Oxon OX14 4RN

and by Routledge
711 Third Avenue, New York, NY 10017

Routledge is an imprint of the Taylor & Francis Group, an informa business

© 2019 selection and editorial matter, Margaret Walshe and Maggie-Lee Huckabee; individual chapters, the contributors

The right of Margaret Walshe and Maggie-Lee Huckabee to be identified as the authors of the editorial material, and of the authors for their individual chapters, has been asserted in accordance with sections 77 and 78 of the Copyright, Designs and Patents Act 1988.

All rights reserved. No part of this book may be reprinted or reproduced or utilised in any form or by any electronic, mechanical, or other means, now known or hereafter invented, including photocopying and recording, or in any information storage or retrieval system, without permission in writing from the publishers.

Trademark notice: Product or corporate names may be trademarks or registered trademarks, and are used only for identification and explanation without intent to infringe.

British Library Cataloguing-in-Publication Data

A catalogue record for this book is available from the British Library

Library of Congress Cataloging-in-Publication Data

A catalog record has been requested for this book

ISBN: 978-1-138-08754-5 (hbk)

ISBN: 978-1-138-08761-3 (pbk)

ISBN: 978-1-315-11036-3 (ebk)

Typeset in Sabon
by Swales & Willis Ltd, Exeter, Devon, UK

Please visit the eResource at www.routledge.com/9781138087613

Dedication and acknowledgement

As researchers who were both initially clinicians, we well recognize that our best teachers for understanding dysphagia and its management are our patients. This book is dedicated to these patients, who challenge our thinking, tolerate our inadequacies and patiently (or not) wait for us to find the answers to alleviate the outcomes of their impairment. It is through their idiosyncrasies that we learn to stretch our thinking and create new management approaches.

Great regard is given to the clinicians who we chose to contribute because they very likely share these beliefs. We thank them for sharing what they have learned through their clinical engagement with those who depend on us for care.



Taylor & Francis

Taylor & Francis Group

<http://taylorandfrancis.com>

Contents

| | |
|---|-------|
| <i>List of illustrations</i> | ix |
| <i>List of contributors</i> | xii |
| <i>Preface</i> | xvii |
| <i>List of abbreviations</i> | xviii |
| | |
| 1 Case reports in dysphagia: an introduction | 1 |
| MARGARET WALSH AND MAGGIE-LEE HUCKABEE | |
| | |
| 2 Instrumental assessment and skill-based dysphagia rehabilitation following stroke | 9 |
| LUCY GREIG, KRISTIN GOZDZIKOWSKA AND MAGGIE-LEE HUCKABEE | |
| | |
| 3 Chronic dysphagia following traumatic brain injury | 26 |
| JULIE REGAN | |
| | |
| 4 Management of a patient with amyotrophic lateral sclerosis: focus on patient autonomy and quality of life | 40 |
| PAIGE NALIPINSKI AND STACEY SULLIVAN | |
| | |
| 5 Dysphagia in Parkinson’s disease | 53 |
| EMILIA MICHOU AND VICKY NANOUSI | |

| | | |
|----|---|-----|
| 6 | Dysphagia associated with head and neck cancer | 66 |
| | GRAINNE BRADY AND JUSTIN ROE | |
| 7 | Dysphagia in an individual with Alzheimer's disease | 84 |
| | MARGARET WALSHE, ÉADAIOIN FLYNN AND MARION DOLAN | |
| 8 | Dysphagia associated with respiratory disease | 97 |
| | ULRIKE FRANK AND KATRIN FRANK | |
| 9 | Multidisciplinary management of paediatric dysphagia | 117 |
| | PAIGE THOMAS, SASHA ADAMS AND MAGGIE-LEE HUCKABEE | |
| 10 | Beyond case reports: putting the single-subject design to work | 129 |
| | JOSEPH MURRAY | |
| | <i>Index</i> | 146 |

List of illustrations

Supplementary (Suppl) materials available on the eResource page at www.routledge.com/9781138087613

Tables

| | | |
|-----|--|-----|
| 1.1 | CARE guidelines (adapted checklist for case reports in dysphagia) | 5 |
| 2.1 | Timeline of relevant medical history and inpatient interventions | 13 |
| 3.1 | Traumatic brain injury (TBI) signs and symptoms | 28 |
| 3.2 | Dysphagia rehabilitation programme | 34 |
| 3.3 | Outcome measurement | 36 |
| 4.1 | Timeline of relevant medical history and interventions | 42 |
| 5.1 | Medical history and initial assessments | 55 |
| 6.1 | Clinical care timeline | 69 |
| 6.2 | Outcome measures in head and neck cancer | 71 |
| 7.1 | Recommendations for eating, drinking and swallowing for H | 91 |
| 8.1 | Spirometric classification of COPD severity based on post-bronchodilator FEV ₁ | 98 |
| 8.2 | Respiratory treatment components and intended effects (rationale) | 107 |
| 8.3 | Swallowing treatment components and intended effects (rationale) | 108 |
| 8.4 | Results of pre-treatment and post-treatment measurements and normative ranges/cut-off scores | 110 |

Figures

| | | |
|------|--|-----|
| 2.1 | High-resolution manometry (HRM) spatiotemporal plot on admission | 16 |
| 2.2 | High-resolution manometry (HRM) spatiotemporal plot on discharge | 20 |
| 3.1 | Traumatic brain injury classification | 27 |
| 3.2 | Timeline of clinical care | 31 |
| 5.1 | Timeline according to CARE for clinical case of dysphagia in Parkinson's disease | 54 |
| 7.1 | Timeline of clinical care | 93 |
| 8.1 | Relationships between clinical manifestations of the chronic respiratory disease and swallowing difficulties leading to malnutrition in patients with COPD | 99 |
| 8.2 | Timeline of clinical care | 103 |
| 8.3 | Components of respiratory and swallowing assessment | 104 |
| 10.1 | Simple goal charting | 134 |
| 10.2 | ABA design | 135 |
| 10.3 | Tongue strength and buccal retention | 135 |
| 10.4 | ABAB design | 137 |
| 10.5 | ABABAC design | 139 |
| 10.6 | Bell curve for isometric effort | 141 |
| 10.7 | Celebration/trendline isometric effort | 141 |

Supplementary material

| | |
|-----|---|
| 2.1 | Videofluoroscopic swallowing study: mid-treatment |
| 2.2 | Videofluoroscopic swallowing study: post-treatment |
| 3.1 | Videofluoroscopic swallowing study |
| 4.1 | DMC–videofluoroscopic swallowing study 1 |
| 4.2 | DMC–videofluoroscopic swallowing study 2 |
| 5.1 | Table 1 Signs of dysphagia in Parkinson's disease observed on instrumental assessment |
| 5.2 | Table 2 Changes in SWAL–QOL ratings in patient with Parkinson's disease |
| 5.3 | Videofluoroscopic swallowing study 1 |
| 5.4 | Videofluoroscopic swallowing study 2 |

- 5.5 Videofluoroscopic swallowing study 3
- 7.1 Videofluoroscopic swallowing study: Alzheimer's disease
- 7.2 Videofluoroscopy report
- 8.1 Video—pursed-lips breathing
- 8.2 Video—flutter
- 8.3 Video—cornet
- 8.4 Video—sniffing and huffing
- 8.5 Video—inspiratory muscle training
- 8.6 Video—expiratory muscle training
- 8.7 Video—car drive position
- 9.1 Video—videofluoroscopic swallowing study

Contributors

Sasha Adams graduated with a Bachelor degree (first class honours) in speech and language pathology at the University of Canterbury in New Zealand in 2017. She completed an honours project in the area of paediatric dysphagia under the supervision of Professor Maggie-Lee Huckabee. Since then, she has been based in a clinical role in the area of neurorehabilitation for a district health board. She has a particular interest in the area of adult and paediatric dysphagia.

Grainne Brady is the Clinical Lead Speech and Language Therapist at the Royal Marsden NHS Foundation Trust. Since completing her undergraduate degree at Trinity College Dublin in 2008, she has worked at specialist oncology and head and neck cancer centres in Ireland, before moving to the Royal Marsden NHS Foundation Trust in London in 2013. She was awarded her National Institute for Health Research (NIHR)-funded Master's in Research by St George's, University of London in 2016. Grainne's research interests include head and neck cancer, dysphagia in lung cancer and palliative care.

Marion Dolan is a speech and language therapist who has worked for the past 7 years with the Health Services Executive in Ireland, Enable Ireland, Dublin and in a research capacity with Trinity College Dublin. Marion's interest in dementia arose from personal experience of caring for a close relative with dementia. She has completed research on modifying the acute hospital ward environment to facilitate communication for people with dementia and was awarded Trinity College Dublin's Beggs Leask Prize for this research.

Éadaoin Flynn is Senior Speech and Language Therapist at Tallaght University Hospital, Dublin. She has extensive clinical experience in dysphagia assessment and management with a variety of populations presenting with neurological conditions. Her dysphagia research

interests include diet modification as an intervention for oropharyngeal dysphagia in people with dementia, respiratory–swallowing coordination, videofluoroscopy and radiation practices. She has an MSc specializing in dysphagia from Trinity College Dublin. She is also a Cochrane Research Fellow and is involved with the Cochrane Dementia and Cognitive Improvement Group.

Katrin Frank is a physiotherapist und respiratory therapist. She has worked in acute care and early neurorehabilitation settings since 1997, with a focus on tracheotomized patients with and without dysphagia, ventilator weaning and management of respiratory disorders. Besides leading and working with an interdisciplinary team of physiotherapists, occupational therapists, and speech and language therapists she develops and validates respiratory intervention concepts. She enjoys teaching other clinical teams to improve their interdisciplinary dysphagia management and integrate respiratory treatment approaches into their dysphagia intervention programmes.

Ulrike Frank worked as a speech–language therapist in early neurorehabilitation from 1997 to 2004 and then shifted her workplace to a university environment, where she finished her PhD by developing an interdisciplinary tracheostomy-weaning concept. She enjoys teaching students to understand physiology and impairments of swallowing and speaking, and to do their first research steps in the Swallowing Research Lab that she founded in 2009. Furthermore, she has a great time with Katrin Frank teaching clinical teams in interdisciplinary dysphagia treatment workshops.

Kristin Gozdzikowska began clinical work as a speech–language therapist in acute care and inpatient rehabilitation, developing a specific interest in the assessment and management of dysphagia. She received her Master’s degree at the University of Washington in 2011 and her Doctoral degree at the University of Canterbury, New Zealand, in 2016. Currently, she is a Post-Doctoral Fellow at the University of Canterbury Rose Centre for Stroke Recovery and Research and a speech–language therapist working with patients after moderate-to-severe brain injury at Laura Fergusson Trust. Her research interests include best practice in instrumental assessment and rehabilitation of dysphagia following stroke, contributing to the evidence base from which clinicians can make sound management decisions.

Lucy Greig has been practising as a speech–language therapist in the field of acquired swallowing and communication disorders for over 15 years. She is currently the Clinical Director of the Rose

Rehabilitation Clinics at the University of Canterbury Rose Centre for Stroke Recovery and Research, providing diagnostic assessment and intensive rehabilitation to those with acquired dysphagia and language disorders.

Maggie-Lee Huckabee, PhD, worked clinically for 15 years before returning to university for a research degree. She is now a Professor in the Department of Communication Disorders, the University of Canterbury and Director of the Rose Centre for Stroke Recovery and Research at St Georges Medical Centre in Christchurch New Zealand. Her research interests focus on the complexities of behaviourally driven neural adaptation and biomechanical change leading to swallowing recovery.

Emilia Michou is currently an Assistant Professor of Speech & Language Therapy in Greece, and an honorary Research Fellow at the Centre for Gastrointestinal Sciences within the School of Medical Sciences, University of Manchester, UK. In recent years, she received independent research awards and funding from a number of sources including Parkinson's UK and the National Institute for Health Research (NIHR). In addition to research on neurorehabilitation of dysphagia, she teaches and supervises graduates and postgraduate students in the field of deglutition and its disorders, and continues to practise as a clinician. Dr Michou has recently been elected as a board member of International Association of Logopedics and Phoniatrics (IALP) and is a Vice-President of the European Society for Swallowing Disorders (ESSD).

Joseph Murray is Chief of the Audiology Speech Pathology Service for the VA Ann Arbor Healthcare System and an American Speech and Hearing Association Fellow. His research and publications are in the area of assessment, treatment and management of patients with dysphagia. He has focused his career on designing and delivering instruction materials in the area of dysphagia assessment.

Paige Nalipinski has worked in the Speech, Language and Swallowing Disorders Department at Massachusetts General Hospital for 25 years and is an Adjunct Instructor in Communication Sciences & Disorders at the MGH Institute of Health Professions in Boston. She is a senior clinician and specializes in neurogenic communication disorders, particularly dysarthria and primary progressive aphasia. She also works on the MGH Multidisciplinary ALS/Neuromuscular Team.

Vicky Nanousi is a registered clinical neuropsychologist practising as a clinician in Greece, and teaching graduate and postgraduate students in the field of language and neuropsychological dysfunctions as a result of brain disorders. She completed her doctoral studies at the University of Essex, UK, following receipt of a PhD Scholarship from the Hellenic State Scholarship Foundation (IKY) Greece.

Julie Regan has 17 years' clinical experience in the assessment and management of adult dysphagia in an acute hospital setting. Her interests include, but are not limited to, instrumental evaluation, neurogenic dysphagia and oesophageal swallowing disorders. She completed her PhD in the School of Medicine in Trinity College Dublin in 2013. Her PhD thesis was entitled 'Adaption of functional lumen imaging probe to evaluate the upper oesophageal sphincter in oropharyngeal dysphagia'. She is currently an Assistant Professor in Trinity College Dublin where she is involved in the coordination of the taught MSc programme in Dysphagia.

Justin Roe is Joint Head of the Department of Speech and Language Therapy at the Royal Marsden NHS Foundation Trust where he has worked since 2007. In addition, he is the Clinical Service Lead for Speech and Language Therapy at the National Centre for Airway Reconstruction at Imperial College Healthcare NHS Trust. He also holds an honorary academic appointment in the Department of Surgery and Cancer at Imperial College London. He was awarded his PhD by the Institute of Cancer Research in 2013. As well as his clinical and leadership roles, Justin continues to be actively involved in research studies in the fields of dysphagia, head and neck oncology, lung cancer and laryngology.

Stacey Sullivan has been working as a medical speech-language pathologist for the past 15 years. She is a member of the adult swallowing disorders team at Massachusetts General Hospital in Boston, with the designation of clinical scholar. She has a specialization in neurogenic swallowing disorders and works as a member of the MGH Multidisciplinary ALS/Neuromuscular team, and at the MGH Center of Excellence for Huntington's disease. Stacey also participates in research studies that analyse aspects of speech and swallowing in the Center for Rare Neurological Diseases at MGH.

Paige Thomas graduated with a Master's in Speech and Language Pathology from the University of Canterbury in 2015. She is currently a PhD candidate at the University of Canterbury Rose Centre for Stroke Recovery and Research, mentored by Maggie-Lee Huckabee.

The combined research and clinical focus of the Rose Centre gives Paige the opportunity to be involved in a variety of complex cases. Her research interests include best practice for the assessment and treatment of dysphagia in neurodegenerative populations.

Margaret Walshe, PhD, is an Associate Professor and Head of Department of Clinical Speech and Language Studies at Trinity College Dublin. She has over 30 years' clinical experience in swallowing disorders and was instrumental in establishing the first postgraduate courses in dysphagia in the Republic of Ireland. She is a Vice-President of the European Society for Swallowing Disorders. Her research interests are acquired neurological dysphagia, implementation science and evidence-based practice.