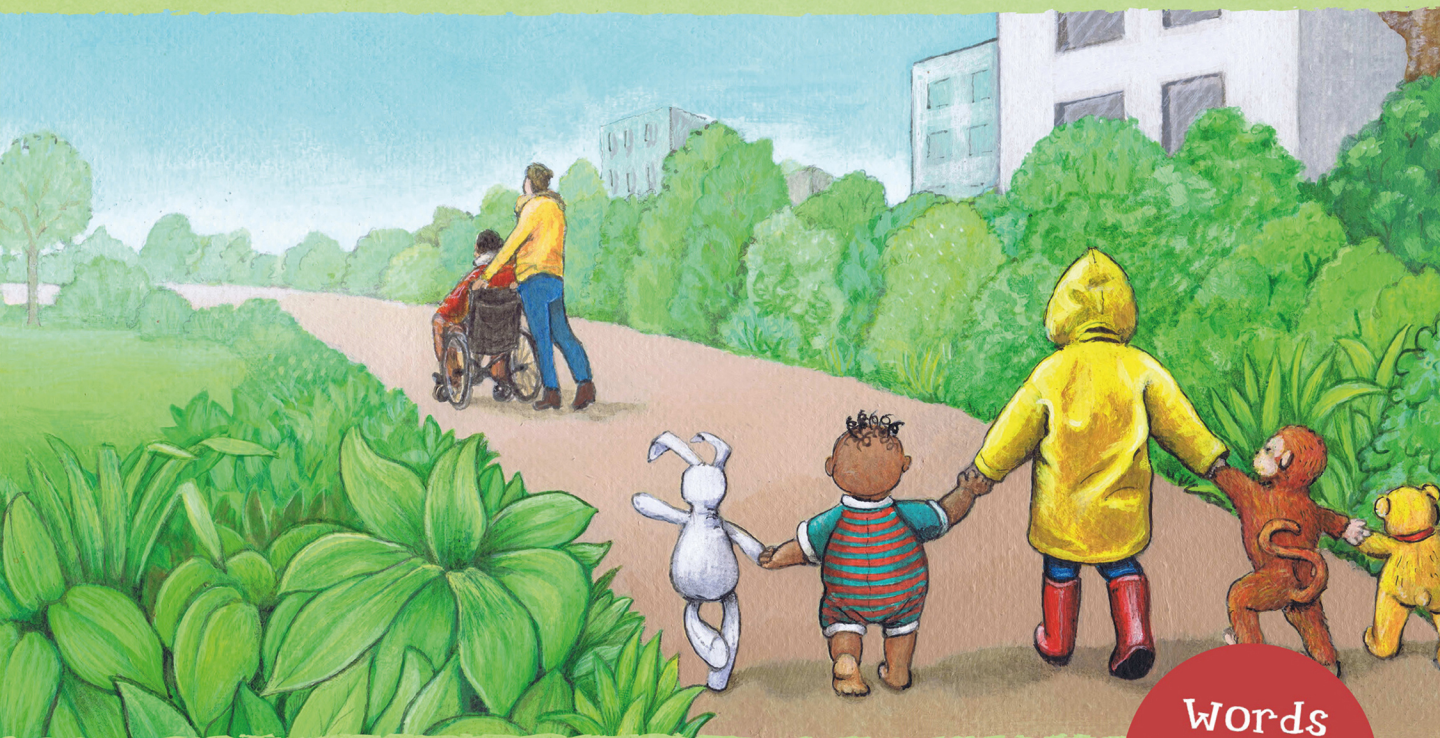


Gone to the Park

A **Words Together** Storybook to
Help Children Find Their Voices



A **Speechmark** Book

Kate Freeman
Illustrated by Jenny Edge

Words
Together
series

GONE TO THE PARK

Gone to the Park, part of the 'Words Together' series, has been created to support children to understand and use two-word sentences.

Using the pivot word 'gone', the simple story and repetitious structure provide an opportunity for the child to hear and experience the sentence structure in new ways. Bright and colourful illustrations provide rich opportunities for conversation and engagement.

This storybook is an exciting resource for early years practitioners, parents, and those working with children at an early stage of speech and language development.

Kate Freeman is a highly experienced speech and language therapist, consultant and former charity director. She is also a mum to three grown-up sons, and a grandmother. Kate's passion is working with children and families, making a difference to their futures.

Kate's career has included working with children, families, groups, local authorities, charities and commercial organisations, providing an insight into the skills of communication and how children learn to talk.

Jenny Edge is a professional artist and illustrator working in a wide range of mediums and styles. She enjoys producing colourful, decorative and ornamental paintings as well as the figurative work she trained in at art school. Although based in Warwickshire, her work can be found all over the world in both domestic and commercial interiors.



Taylor & Francis

Taylor & Francis Group

<http://taylorandfrancis.com>